



*2 Mile Final*



*Sara Lynn Wallin*



# The Band



**2 Mile Final** Is a Country Rock / Southern Rock Band entertaining throughout the Midwest. In their short time together they have been from Wisconsin to Sturgis SD and have shared stages with regional and national acts. Their combined experience coming from well known groups serves them well.

The talent and diversity of four lead vocalists enables them to cover just about any sound from most popular and hard hitting country music of today like Miranda Lambert, Sugarland, Gretchen Wilson, Jason Aldean, Kenny Chesney & Montgomery Gentry to the southern rock of John Mellancamp, 38 Special & Skynyrd. With classics like Cash & Yokum.

**2MF** is a FULLY EQUIPPED, *Hit Kicking, Country Rockin Party Package!* Armed with 12,000 watts of PA equipment, studio quality mixing boards, full production sound & lights, they fit any bill from a full outdoor festival event to the smallest venue.

Experience allows **2MF** to be sensitive to the volume needs of each venue and high quality pro equipment enables the flexibility to become a perfect fit for any size party.



They are excellent at entertaining a crowd and love to keep an audience on their toes. Full entertainment from start to finish with their audience participation drinking games to dance contest, to live band karaoke & jams and more... Keeping the crowd around for the whole night is what every venue wants. That's what you get with a **2 Mile Final** show!



The ultimate goal in every **2MF** show is to have people on their phones calling their friends to "get here before it's over". Leaving the crowd not wanting the party to end is how they make every show into....

**"The Party Heard Around The World"**



# Members

---

At 16 Sara began to realize how much she loved singing country music. Her parents took her to different karaoke shows to get out and be heard, as well as gain a good feel of singing in front of crowds. Sara's voice quickly became well known locally, beginning her passion and journey of country music. After realizing her talent Sara went to Nashville, TN and recorded an eight song CD. The songs were produced by Duane Sciacqua, written by Becky Hobbs, These great people got her moving on the right track!



Since recording her demo, Sara has sang at many different world renown venues that include; Tootsie's Orchid Lounge, Music City Bar and Grill, Nashville Palace, Nashville Crossroads, Midwest Country Theater, Toby Keith's Bar & Grill, Ramble Jam in Minnesota, Medina Ballroom and many more. Along her fabulous journey Sara has been fortunate enough to sing with great artists such as Tommy Cash (Johnny's brother), Steve Hall and the Shotgun Red Band, Clinton Gregory, Buddy Owens, and many more.

Recently, Sara had the pleasure of singing on the Midwest Country Show in Sandstone, Minnesota and was later aired on RFD-TV on March 26, 2011. Then another show at Midwest Country Theater with Tommy Cash. This show was aired on RFD-TV as well on August 20, 2011 viewed throughout 27 countries.

---



Tim was a member of the, now retired, *Westbound Band*. *Westbound*, together for more than 28 years, performed with many national acts and were inducted into the Midwest Rock and Country Hall of Fame. During the time Tim played with *Westbound* they performed with national acts including Ashley Hewitt and Tommy Jennings, Waylon's younger brother. *Westbound* was honored to backup Tommy Jennings at the music festival Country Splash June 2009 starring *Rascal Flatts*, *Kenny Chesney* and *Miranda Lambert*. For Tim, it was an amazing experience. Some of his many influences are *Brian Adams*, *John Mellencamp*, *Ted Nugent*, *Lynyrd Skynyrd*, and *Poison* along with a country flavor from *Waylon Jennings*, *Hank Williams Jr.* and *Charlie Daniels*. He developed an eclectic taste and enjoys many styles of music.

---

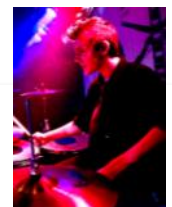
Tony's early start of making music on stage at VFW's and Street Dances as a drummer at 15 years old lit a fire for performing and also began Tony's interest in guitar. At age 17 Tony and some guys from school started their own band called *The X-Press*. His talents enabled him the opportunity to play and sing in several different bands over the years. He has performed with members of *The Johnny Holmes Band*, *Kid Hollywood*, and others. Some of his biggest musical influences are, *Guns n Roses*, *AC/DC*, Brad Paisley, Keith Urban.



Tim started playing the baritone ukulele when he was 10, by 5th grade his parents advanced him to a real guitar and by junior high he launched his first band in his parents basement. He knocked around with whoever he could play with and even took on a professional music director position when churches started adapting to more current sounds, allowing him to use his abilities for not only music and vocal direction but charting as well. He took on bass guitar in the mid 90's due to a "saturation of guitar players in the market". Tim attended MacPhail Center for Music and also plays piano.

---

Mitch received his first drum set when he was 12. That gift put a beat in his heart and set the rhythm for his music career. By age 14, Mitch was playing live on stage in front of 100's of people. Mitch's experience and excellent rhythm is now the heartbeat of the group. Mitch also plays guitar as he continues to expand his talents. His musical influences are *Green Day*, *Foo Fighters*, *The Who*, *Kenny Chesney* and *Jason Aldean*.



## Sample Song List

Gunpowder n Lead  
Stuck Like Glue  
Here For The Party  
Dirt Road Anthem  
Love Don't Live Here Anymore  
Shake It For Me  
That's How Country Boys Roll  
Walk Softly On This Heart Of Mine  
Lot Of Leavin Left To Do  
Guitars & Cadillac's  
Drunker Than Me  
Living in Fast Forward  
ROCK in the USA  
Sweet Home Alabama  
Keep Your Hands to Yourself  
Beer on the Table  
Should have Been a Cowboy  
Johnny B Goode  
How Bout You  
Folsom Prison Blues  
8 Second Ride  
Hicktown

She's Country  
Sideways  
Homeboy  
Last Name  
Goin Out With My Boots On  
Blame it on Waylon  
Fast as You  
American Ride  
Hold On Loosely  
What Do You Think About That  
Fishin in the Dark  
All Summer Long  
Kerosene  
American Honey  
Friends in Low Places  
Every Rose Has Its Thorn  
Margaritaville  
Good to be Me  
The Race Is On  
In Color  
Its All About Tonight  
Play Something Country

## Venues recently played

Toby Keith's, Mnpls, Mn, Wild Mustang Ranch, Sturgis SD, Hamel Rodeo, Hamel, Mn, Pickle Park, Fridley, Mn, Fatboys, East Bethel, Mn, RambleJam, Farmington, Mn, Povlitzkis, Spring Lake Park, Mn, The Station, Big Lake, Mn, Mc Krackens, Burnsville, Mn, Jersey's, IGH, Mn, Trappers, Lino Lakes, Mn, Chops Bar, Hanover, Mn, InnKahoots, Hamel, Mn, Bogart's, Apple Valley, Mn, CR's Sportsbar, Coon Rapids, Mn, Stars & Strikes, Wyoming, Mn, Saints Midway Stadium, St Paul, Mn, Wesober Fest, Nowthen, Mn, Stacy Daze, Stacy, Mn, K-102 St Jude's Ride, Apple Valley, Mn, St Jude's Give Thanks Walk, Edina, Mn

## Videos, Music, Pics & More Info at:



[www.facebook.com/2MileFinal](http://www.facebook.com/2MileFinal)  
[www.facebook.com/SaraLynnWallin](http://www.facebook.com/SaraLynnWallin)



For Bookings  
Contact  
Gres, Corey, or Dave  
651-257-9500

